

PROFESSIONAL STOPWATCH INSTRUCTION MANUAL

Thanks for your purchasing this professional stopwatch. Its advanced Japanese CMOS ,combined scientific mechanical theory makes sure your valuable purchasing of a professional stopwatch. Besides normal functions of stopwatches, it has distinct advantage: Segregated memory, Data can be loaded to computer and printed.



Button A	START/STOP SET
Button B	RESET LAP/SPLIT SELECT
Button C	RECALL
Button D	MODE

■ GENERAL

MODEL	MEMORY
JS-610P	500

■ FEATURES:

CHRONOGRAPH

- Display of lap, split and running chronograph
- Measure up to 9 hours 59 minutes and 59.99 seconds
- 500 recallable lap and split memories
- Segregated memory (capability to memorize LAP time of different races)
- Display of best (BES), slowest (SLO) and average (AVE) lap time for the laps traversed
- Lap counter (000~999)
- Data can be loaded to computer and printed)



TIMER

- Dual timers which start one after another for use in training programs
- Be used as ordinary countdown timer if 2nd timer is not set

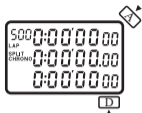
PACER

- Pre-settable from 10 beeps/minute to 320 beeps/minute
- Display of pacer frequency, beep counter elapsed simultaneously

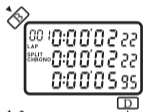
CLOCK

- Display of hour, minute, second, month, date, day, year and alarm, auto calendar
- 12/24 hour format option

■ CHRONOGRAPH OPERATION



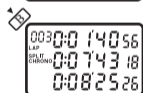
Depress D to select the operating mode. The chronograph indicator "CHRONO" is shown. And the memory balance number is shown in the left up corner. Depress A to start.



Depress B to read the 1st lap time. LAP is shown at the upper row, SPLIT is shown at the middle row and the RUNNING CHRONO is shown at the bottom row.



Depress B to display the 2nd lap time, and the lap counter is shown in the left up corner.



Depress B to display the 3rd lap time, and depress B again to display the 4th lap time. Operate as above procedure, the lap counters within 500 will be shown.



Depress A to stop counting.



Depress C to recall the 1st lap data during the RECALL mode.



Depress C again to recall the 2nd lap data.

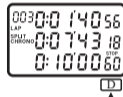


Depress C again to recall the 3rd lap data.

REMARKS:

1. Depress C to recall the current lap and split data directly during the STOP or RUNNING mode.
2. When RECALL display, with each press of C, the stored data are recalled successively in the following order:
Lap/split 1 → 2 → 3 → ... 500 → STOP TIME → AVE → BES → SLO □
3. If the lap or split time is greater than 9 hours 59 min 59.99 sec in any segregated period time, the AVE, BES and SLO information will be disabled.
4. If the lap counter is greater than 500, the stored data more than 500 should be deleted when calculate AVE, BES and SLO.

- The stored memory can be recalled during the STOP or RUNNING status.
- If the lap counter in the left up corner line display "000" and flash, it means that the memory is already full. So please clear the stored data as previously indicated before using it again.
- When there is segregated memory, AVE, BES, SLO and STOP for every lap time take the total storage, so the lap and split counters will be less than 500.



Depress D to return the CHRONO to the stopped status. Depress A to restart counting or B to reset to "0".

REMARKS:



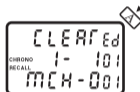
1. After pressing button B to reset to "0", press C button will enter into the RECALL mode. The lower row will display the segregated time number, the middle and left up corner display year, month, middle date, day and weekday. The segregated time number stands for

the serial number of stored data. The biggest serial number is the final memory and the smallest serial number is the first memory. Press button B to select MCH (Memory Chronograph), and then press button C to recall the corresponding lap time record.

2. If there is no memory during counting, it can not go into

the RECALL mode when press C.

- After reset the stopwatch to "0", press B to select MCH and confirm that the serial number after MCH is the memory you want to delete. Then press and hold A button for 3 seconds to clear the current MCH data. If the stored data is already cleared. It will beep and display "Ed", and the serial number will decrease 1



If pressing and holding button A more than 6 seconds, it will beep and display ALL CLEAR Ed, and all the stored data can be cleared.

The stopwatch will give "BiBiBi" sound during clearing the data.

■ Data download and printing

1. Software installation

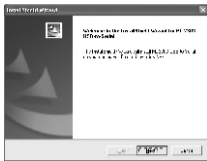
1) Put the CD into the CD-ROM driver. Open file in route: Diver\Win32 bit, Enter PL-2303 Diver Installer.exe, as picture 1; click "next", as picture 2, click "finish".

2) Copy the program file (according to different language version):

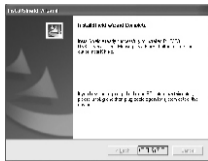
- *Chinese version:* software\chinese\JS-610P_CN.exe

- *English version:* software\English\JS-610P_CN.exe

to your hard disk (if not, you must insert CD every time when printing)



Picture1



Picture2

3) installation finished

2. Data printing

You can print the data, if there is lap/split memory information in stopwatch.

1) Connect stopwatch with computer by transmission line
(If have not installate the printing program , there will be dialog box NEW HARDWARE WAS FOUND. Please close this dialog box and back to Step 1:Software installation to do it.)

2) Press D to choose printing style.

3) Double-click the program file: 610P_EN.exe (or Chinese version 610P_CN.exe). If there is no this file now, please back to Step 2 of software installation to copy the program file. As picture 3.

4) Press A to transmit the data to printing window. When transmission finish, there is END signal, as picture4.

(Remark:if no need frequent transmission, please do not Press A often.)

5) Finally, press FILE-> PRINT to execute printing.



Picture3



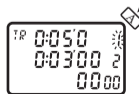
Picture4

■ TIMER OPERATION

Depress D button until the stopwatch goes to the TR mode. The top row is the display for the 1st timer and the middle row is the display for the 2nd timer.

Press and hold B button for 2 seconds to go into the SET TR mode with the hour digit of the 1st timer blinking. Press A button to set to desired hour for countdown. Press B to go to the first digit in minutes and press A to set minutes. Similarly by using B and A buttons, the desired countdown time for the 1st and 2nd timer can be set.

Press A to start countdown with the "1" at the top right corner blinking



and the timer setting counting down. When the 1st timer approaches zero, the timer gives 4 beeps and the 2nd timer starts counting down immediately. When the 2nd timer approaches zero, it gives 2 beeps and the 4 digit counter at the lowest row advances by 1 automatically. At anytime during countdown, pressing A will stop counting.

Remark:

1. When the 1st timer is set, it is default 10 hour. When the 2nd timer is not set, it is default of zero (not working).
2. If only the 1st timer is set, the timer is used as an ordinary countdown time and will give automatically when the timer reaches zero.

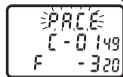
■ PACER OPERATION



Depress D to select the PACER mode.

The display will be as shown with the last 2 digits at the lower row blinking. At this status depress

B will sequence the PACER frequency as follows: 10, 20, 30, 40, 60, 80, 120, 160, 200, 220, 240, 320

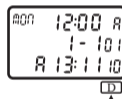


Depress A to start PACER.

A beeping sound of 320 beeps/minute will sound. The beep counter is at the center and PACER frequency is at the lower row. The beep counter has a range of 9999. Depress A to stop PACER.

Remarks: Pacer will be reset if stopwatch is switched to another mode.

■ CLOCK AND ALARM TIME ADJUST



Depress D to select CLOCK mode.

The alarm hour, alarm minutes, month, date, day, year, hour, minute and seconds are displayed as shown.

Keep B pressed for 2 seconds to show the clock setting display. The alarm time HOUR digits start flashing. Time setting can be done by means of depressing B to select digits and A to advance digits.

Remarks: Alarm is automatically armed if alarm hour or minute has been set. Alarm can also be armed or disarmed by depressing C at normal time mode. When alarm is armed " ((•)) " will be on the

display and when not ,(((♣))) " will be not on the display. When reach to alarm time it will sound for 60 seconds.

■ CARE OF YOUR STOPWATCH

▲ WATER RESISTANCE

The stopwatch is designed to withstand accidental contact with water such as splashes or rain, but it is not designed for use in water. Do not operate the buttons when the stopwatch is wet.

▲ TEMPERATURE

Do not leave your stopwatch under direct sunlight or in very high temperature for a long time, the display may become black. Do not leave your stopwatch in very low temperature as this may cause a slight time loss or gain and the change of digits becomes slow. In both cases the above conditions will be corrected when the stop watch return to normal temperature.

▲ SHOCKS

Be careful not to drop your stopwatch or hit it against hard surface, as it may cause a mechanical damage.

▲ STATIC ELECTRICITY

The integrated circuit in your stopwatch can be affected by static electricity. If the static electricity is

very strong, a permanent damage can occur. Be careful of the screen of the TV set and the wearing of clothing made of synthetic material in dry weather; in such cases a very strong static electricity can be generated.

▲ MAGNETISM

Not affected.

▲ CHEMICALS

Do not expose your stopwatch to solvents such as gas-online and alcohol, spray of cosmetics, cleaners, paints etc as they may cause damage to the stopwatch

▲ BATTERY REPLACEMENT

When the display becomes dim or faded out, battery replacement is necessary.

1. Unscrew and remove back cover.
2. Unscrew the battery contact and take off the old battery.
3. Replace with fresh lithium battery CR2032 or equivalent.
4. Before putting in the new battery make sure that the triangular contact is in the triangular slot under the battery, and screw the battery contact.
5. Press button A, B, C, and D at the same time to reset.

